



# Agricentre

The Agricentre is a major multi-purpose facility at Westerner Park with approximately 71,000 sq ft (6,600 sq m) that is designed to enhance the experience and exposure for the agricultural community. Westerner Park is an agricultural society, hosting a variety of agricultural events each year.



## Venue Capacities

- **Agricentre:** 71,000 sq ft free span
- **Agricentre East:** 38,000 sq ft free span
- **Agricentre West:** 33,000 sq ft free span

## Amenities

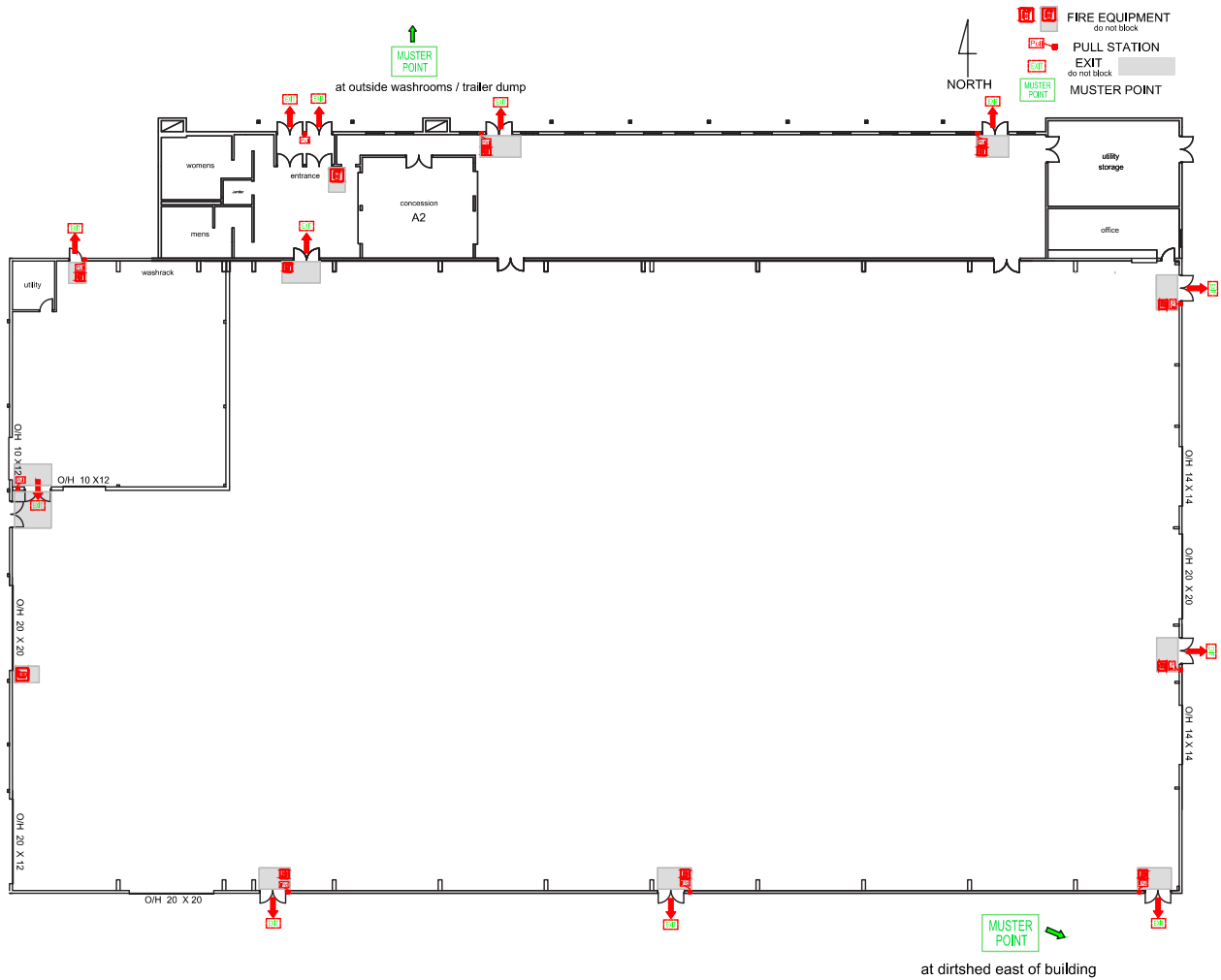
- Show office
- Includes telephone
- Announcer stand
- Public address system
- Indoor wash racks (hot and cold, shared between East and West Agricentre)
- Washrooms (handicap accessible)
- Adjoining north banquet area
- Seasonal riding area: 210' x 117'
- Concession
- Gallery in Agricentre West
- Customizable space can include optional warm up space and indoor stalling
- Bleacher seating
- Four large tents with 288 stalls
- Over 200 additional stalls available upon request
- Covered riding ring with lights
- Two in-field warm-up rings
- Completely paved facility
- RV and trailer parking
- Loading chutes
- Timed event chutes
- Clipping chutes
- Jump equipment
- Trail equipment
- Kiser groomer
- Sales ring with seating for 250 people
- Up to 78 cattle pens (10' x 10', 10' x 20', or 20' x 20' available upon request)
- Weigh scale



# Agricentre East - Floor Plan

## Venue Capacities

- **Agricentre East:** 38,000 sq st free span
- Multiple overhead access doors:
  - > West: 20' x 20' and 20' x 12'
  - > South: 20' x 20'
  - > East: 14' x 14' and 14' x 14'



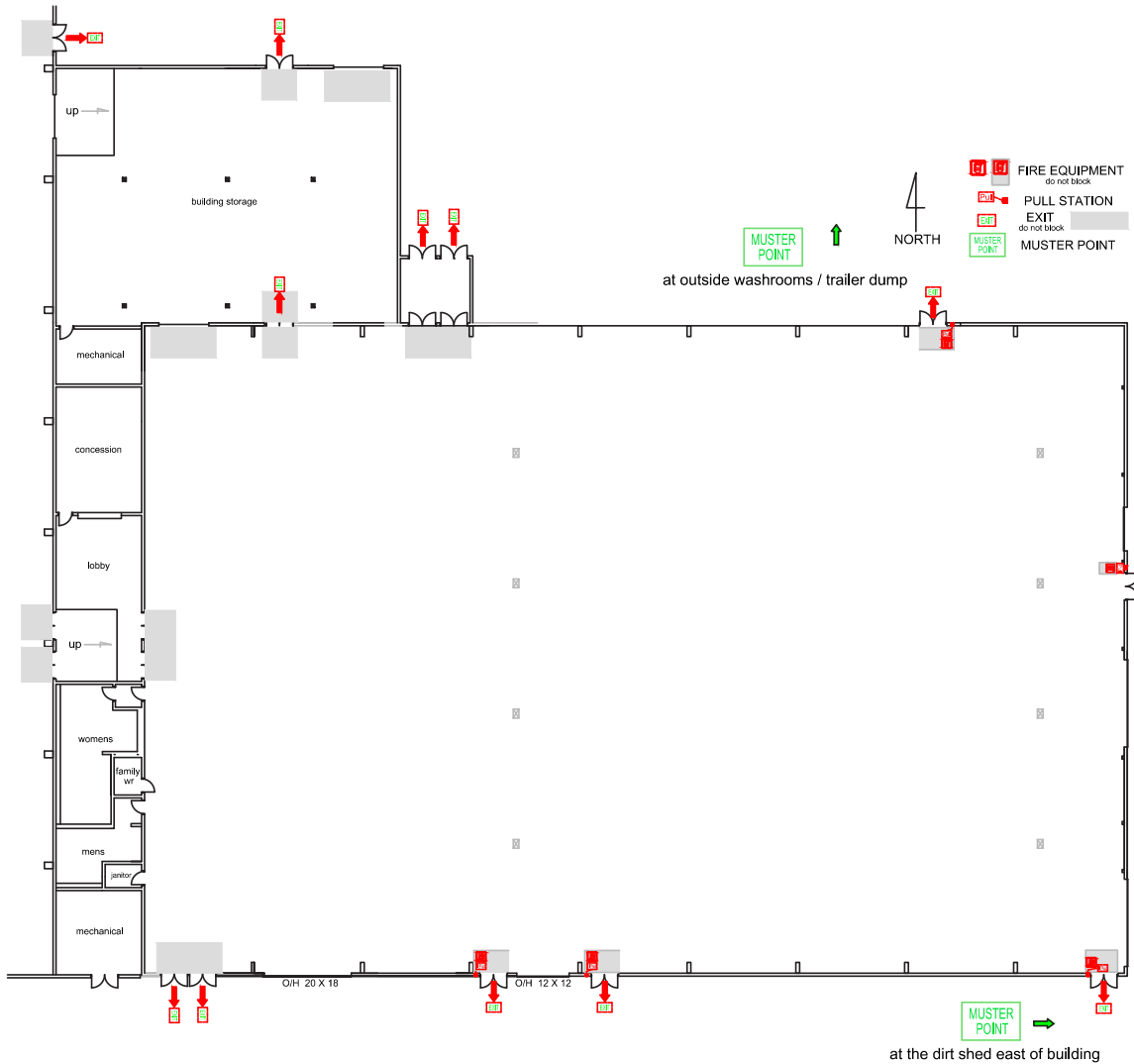
**Please note:** Due to construction on the new Exhibition Hall, the most up to date venue map for the Agricentre should be updated from your Sales Representative. Thank you for your patience while we continue to grow our world class facilities.



# Agricentre West - Floor Plan

## Venue Capacities

- **Agricentre West:** 33,000 sq st free span
- Multiple overhead access doors:
  - > South: 20' x 18' and 12' x 12'



**Please note:** Due to construction on the new Exhibition Hall, the most up to date venue map for the Agricentre should be updated from your Sales Representative. Thank you for your patience while we continue to grow our world class facilities.