



# Stockmens Pavilion

Stockmens Pavilion is approximately 42,100 sq ft (3,900 sq m) of premier exhibit space that accommodates numerous types of events such as trade shows, agricultural and sporting events.



## Venue Capacities

- 42,100 sq ft free span
- Seating accommodations:
  - > Theatre-style capacity: 1,000
  - > Banquet-style capacity: 1,200

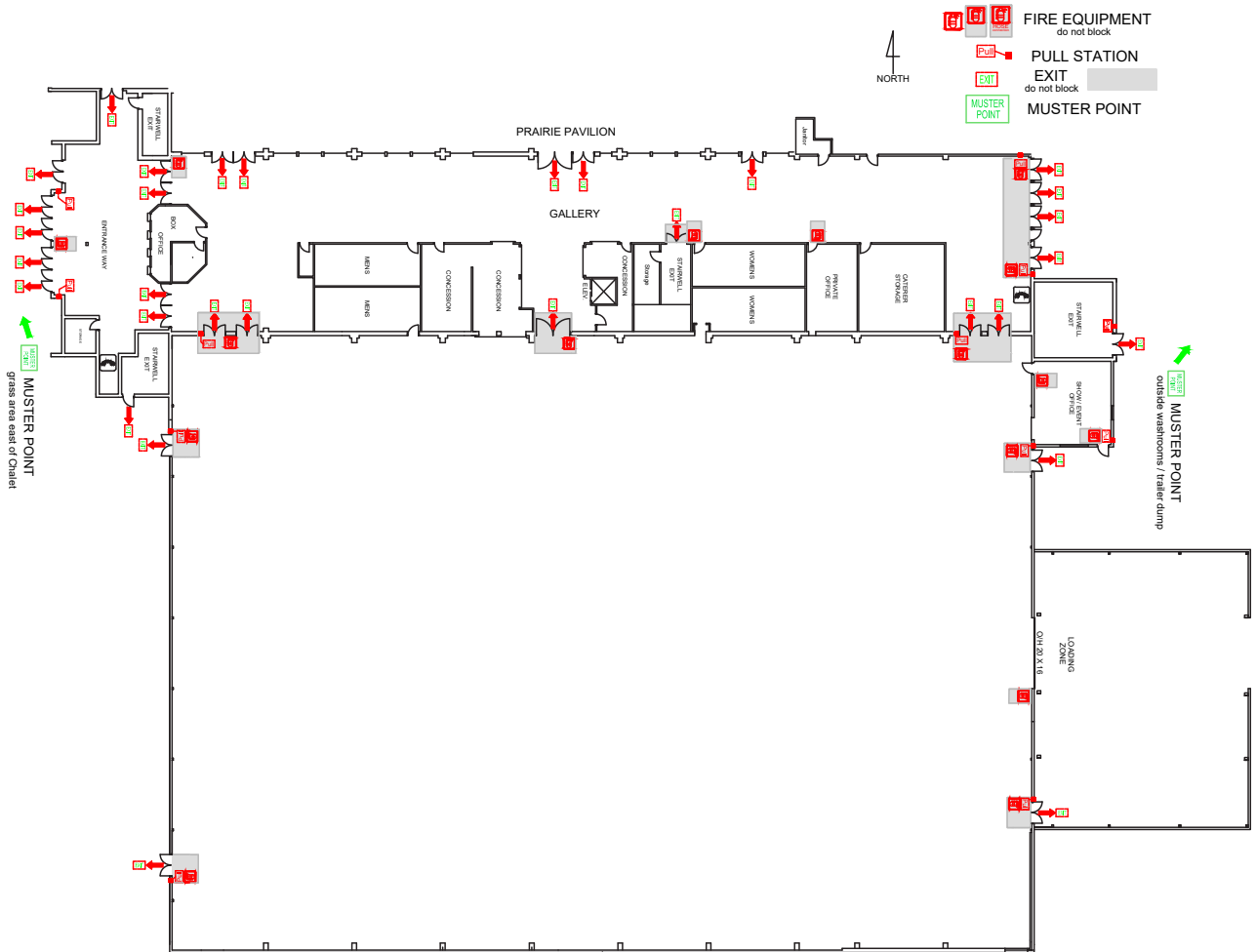
## Amenities

- Box office
- Sheltered load-in area
- Concession
- Adjoining gallery<sup>1</sup>
- Wireless internet
- Show office
- Air conditioning
- In-house public address system
- Concrete floors with a 500 lb/sq ft floor load
- Barrier free
- Paved parking areas
- Staging available
- Multiple overhead access doors (w x h):
  - > East door to outside: 19'9" x 15'11"

1. Gallery is a shared common public area for both the Prairie and Stockmens Pavilions.



# Stockmens Pavilion



**Please note:** Due to construction on the new Exhibition Hall, the most up to date venue map for the Stockmens Pavilion should be updated from your Sales Representative. Thank you for your patience while we continue to grow our world class facilities.